

Ollscoil  
Teicneolaíochta  
an Atlantaigh

Atlantic  
Technological  
University

# Online & Flexible Learning



## Micro-Credentials Quick Guide

25  
26



Galway | Mayo | Donegal | Sligo

[atu.ie/microcredentials](https://atu.ie/microcredentials)

 Human  
Capital  
Initiative

Cén fáth ar chóir duit  
Ollscoil Teicneolaíochta an  
Atlantaigh a Roghnú?

# Why study at Atlantic Technological University?

## Collaborative Strength

Atlantic Technological University offers undergraduate and postgraduate courses in business, science, computing, engineering, culinary arts, hospitality, tourism and heritage. Students at ATU will join a learner population of almost 27,000 learners, spanning 690+ academic programmes from pre-degree to doctoral level. ATU's strength lies in our collaborative ethos, realising our shared goals by elevating and championing success.

## Academic Excellence

ATU offers a new higher educational experience. Building on the foundations of applied learning, our university grows through research informed teaching. We empower learners to realise their full potential, developing responsible citizens, critical thinkers, innovators, and problem solvers equipped for life-long learning.

## Research, Engagement & Innovation

At ATU, we continue our proud tradition of industry engagement through collaborative research and providing micro-credentials that meet employer and employee skills requirements. As the leading higher educational institution in the region, our students, staff and communities are intrinsically linked to regional employers, building sustainable employment opportunities and driving growth in the west and north-west.

## Global Opportunities

Learners worldwide study ATU's micro-credentials, reflecting our commitment to developing global citizens who contribute to sustainable economies. In studying a micro-credential at ATU, learners become part of this global community with a mindset that reaches far beyond our shores.



Cad is cúrsa micridhintiúr ann?

# What are Micro-Credentials?

**A micro-credential is a short, accredited course that allows learners to study flexibly and to choose modules to suit their own professional development or skills needs. They are also referred to as Special Purpose Awards, Minor Awards, and Supplementary Awards.**

ATU aligns with the European Commission's recommended definition of a micro-credential:

*“A micro-credential is the record of the learning outcomes that a learner has acquired following a small volume of learning. These learning outcomes have been assessed against transparent and clearly defined standards. Courses leading to micro-credential are designed to provide the learner with specific knowledge, skills and competences that respond to societal, personal, cultural or labour market needs. Micro-credentials are owned by the learner, can be shared and are portable.”*

*They may be standalone or combined into larger credentials. They are underpinned by quality assurance following agreed standards in the relevant sector or area of activity.”*

These short-duration courses, requiring a relatively low time commitment, typically range from 5 to 30 credits. They offer an ideal pathway for returning to education, gaining new skills, or enhancing existing ones, all in a flexible and accessible format.

Among the areas they cover are Business & Industry, Environmental Sustainability, Healthcare, Engineering & Construction, Computing, and Quality.

ATU is pleased to offer part-funded places on over 30 of our micro-credential courses, supported through the HCI Pillar 3 Micro-Credential Learner Fee Subsidy initiative in higher education.

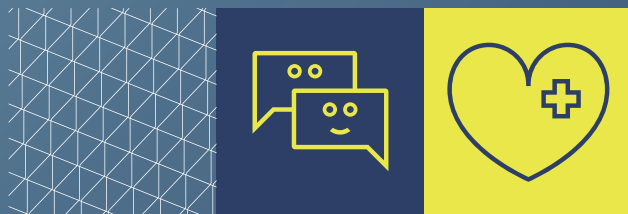
For more, check out [atu.ie/microcredentials](https://atu.ie/microcredentials)



# Uasoiliúint le haghaidh Thodhchaí na hOibre

## Upskilling for the Future of Work

At ATU, we develop courses aligned to industry and societal demand. Our graduates are equipped with the skills and confidence to progress in their chosen career, with excellent opportunities both nationally and internationally.



### Biopharma

With all of the top 10 global biopharmaceutical companies located in Ireland, industry demand for continuous professional development is evident. ATU is recognised as a leader in delivering accredited qualifications in areas of bioprocessing, biomedical science, biopharmaceutical and pharmaceutical science.



### Industry 4.0

Digitalisation is enabling a reinvention of manufacturing, increasingly moving towards automation and data exchange. Engineering for the future requires skills in automation, cybersecurity, sensor technology, cloud computing, big data and analytics.



### Medical Device Technology

As the top location in Europe for medical device manufacturers, Ireland needs to continuously invest in and develop professionals who can lead the industry.



### Project Management, Leadership & People Management

With rapid advancements in technology, industry is experiencing the greatest level of change since the Industrial Revolution. Developing leaders who are equipped to effectively manage complex change is essential to stay competitive in our global economy.



### Environmental Sustainability

Climate change, understanding our environmental responsibilities and developing strategies and practices to effectively manage our natural resources are relevant to individuals, society and industry. Local government, state agencies and industry are investing in technical knowledge, skills and resources to guide policy, monitor and manage change.



### Health, Nutrition & Food Innovation

Delivering effective public health strategies on health promotion, exercise and nutrition are all parts of the evolving remit of healthcare professionals. It is vital we continue to build skills in researching, analysing health data and develop leaders within our healthcare sector. Innovation and developing sustainable food systems are all part of the Climate Action Plan to live as responsible global citizens.



### Educating for the Future

To respond to the rapidly changing world of work, our educators are embracing new inclusive and innovative teaching methods to improve access to education, developing supports to ensure students from early years to tertiary level achieve their potential.



### Digital Transformation

From analytics and DevOps to cybersecurity and software development, industry requires skilled technology teams to drive digital transformation. The global economy offers opportunities to graduates, regardless of location, to excel in the digital economy.

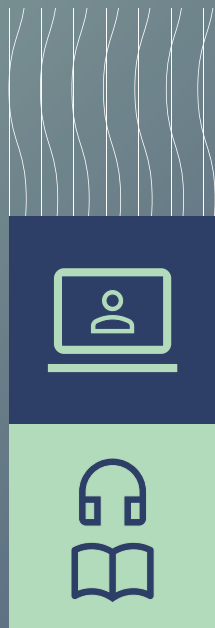


# Roghanna Staidéir Solúbtha

## Flexible Study Options

We understand that many of our part-time, flexible students are juggling work and family commitments in between learning.

Our focus has always been to deliver a flexible learning experience designed to suit you and your life.



To successfully balance work, life, and flexible learning, it's important to have a clear understanding of the time you'll need to dedicate to your studies. Being realistic about your time commitment can help you stay focused, manage stress, and achieve your learning goals, while continuing to work full-time.

For part-time online or blended learning, it is recommended that you allocate a minimum of 5 hours per week for each 5-credit module. Micro-credentials are typically short in both duration and time commitment, and are usually offered in 5-, 10-, or 15-credit formats, though some are up to 30 credits.

With micro-credentials, you can choose modules to suit your professional development or skills needs. They are an ideal way to return to education, upskill in a new area, or further develop skills in a flexible manner.

### Online

Learn online with ATU by attending live lectures through our online learning environment. Simply log on from work, home, or anywhere in the world, and be part of weekly lectures. Engage in discussions, chat, and interact with fellow students and lecturers. Unable to attend? Recorded sessions are available within hours, so students can watch back at a time that suits them.

### Blended

Blended learning offers a flexible approach to completing your chosen course, combining online components with in-person classroom experiences to support an accessible and engaging learning style. In a blended course, students can watch lectures, access readings, ask questions, and submit assignments online, allowing classroom time to be dedicated to interactive discussions and activities.

### On-Campus

Some of our courses are available for 100% on-campus study, offering students a comprehensive in-classroom experience at ATU. On-campus students will engage with all practical elements outlined in the learning outcomes. In addition, online students may have access to guest lectures, tutorials, and residential workshops through live streaming or recorded sessions, ensuring a rich and inclusive learning experience.

### Peer-to-Peer Learning

Working collaboratively is part of the college experience and part-time learning is no different. Group learning and assignments encourage peer support and small classroom sizes ensure students are supported throughout the learning journey.

### Online Student Advisors

The majority of ATU courses are supported by a dedicated team of Online Student Advisors, who are here to assist flexible learners throughout your academic journey. They will serve as a primary point of contact for any non-academic queries and are available to provide information, guidance, and support during both the application process and your time as a student at ATU.

### Student Supports

No matter which study option you choose, Online, Flexible & Professional Development (OFPD) students have a range of supports available to them on their learning journey, including access to academic writing and maths support, learning and disability support and library services.

# Cúrsaí faofa faoin HCI

## HCI Funded Approved Courses

Course Title	Award	Credits	NFQ	Subsidised Programme Fee €
<b>Business</b>				
Financial Management and Sustainability	Postgraduate Certificate	30	Level 9	780
Applied Digital Business	Certificate	30	Level 9	480
Logistics and Marketing	Certificate	15	Level 7	200+
<b>Environmental Sustainability</b>				
SDGs and People	Certificate	5	Level 6	70
SDGs and Prosperity	Certificate	5	Level 6	70
SDGs and Partnership	Certificate	5	Level 6	70
SDGs and Planet	Certificate	5	Level 6	70
SDGS Partnership, People, Planet and Prosperity	Certificate	20	Level 6	168
Introduction to Sustainability & the Natural Environment	Certificate	10	Level 9	360
Energy Conservation (Part L, F, J, C, D, Sustainability, Circular Economy)	Certificate	10	Level 9	134
<b>Civil Engineering and Construction</b>				
Building Information Modelling (BIM) Architecture	Certificate	10	Level 8	134
Building Information Modelling (BIM) Infrastructure	Certificate	10	Level 8	134
Fire Safety (Part B Dwelling House)	Certificate	5	Level 9	67
Structures (Part A, C, D, Eurocodes and Circular Economy)	Certificate	5	Level 9	67

Course Title	Award	Credits	NFQ	Subsidised Programme Fee €
Introduction to Legislation for the Built Environment	Certificate	10	Level 9	134
Circular Economy Principles for the Built Environment	Certificate	15	Level 9	200
Project Management	Certificate	15	Level 9	1,125
BIM & Lean Construction	Postgraduate Certificate	25	Level 9	750
BIM & Digital Leadership	Certificate	15	Level 9	200
Circular Economy Leadership and Organisational Transitions	Standalone Module	15	Level 9	200
Digital Construction Technology	Certificate	30	Level 7	680
<b>Computing</b>				
Sensors for Autonomous Vehicles	Postgraduate Certificate	30	Level 9	900
Automotive Artificial Intelligence	Postgraduate Certificate	30	Level 9	900
<b>Quality</b>				
Advanced Lean Sigma Quality – Black Belt	Certificate	30	Level 8	840
Quality Assurance	Certificate	30	Level 6	1,050
Lean & Op Ex (Yellow Belt)	Certificate	5	Level 7	100
Lean Sigma Quality (Green Belt)	Certificate	15	Level 7	300

+ January start. Subject to HCI Pillar 3 funding still available under the Higher Education 4.0 Project.

# Cúrsaí faofa faoin HCI

## HCI Non Funded Approved Courses

### Micro-credentials, Minor Awards, Special Purpose Awards

ATU offers a comprehensive suite of short accredited courses aimed at supporting those in the workforce to upskill and bridge any skills gaps. This method of studying allows you to choose modules to suit professional or personal development goals. Short courses are an ideal way to return to education.

Course Title	Award	Credits	NFQ	EU Fees €
<b>Environmental Sustainability</b>				
Introduction to Blanket Peatland Restoration	Certificate	10	Level 6	800
Blanket Peatland Restoration	Certificate	10	Level 6	800
<b>Science</b>				
Aseptic Biopharmaceutical Operations	Certificate	30	Level 6	3,150
Downstream Processing	Certificate	5	Level 6	200
Upstream Processing	Certificate	5	Level 6	200
Fill Finish Operations	Certificate	5	Level 6	200
Cleanroom Behaviour in Biopharmaceutical Manufacturing	Certificate	5	Level 6	200
Biopharmaceutical Processing	Certificate	30	Level 6	3,150
Archaeological Excavation and Post-excavation	Certificate	10	Level 6	3,000
Archaeological Excavation and Post-excavation International	Certificate	12	Level 6	3,000
Archaeological Field Studies International	Certificate	18	Level 6	4,500
Composting Facility Operation	Certificate	10	Level 6	1,950
Introduction to Irish Archaeology	Certificate	15	Level 6	2,400
Irish Wild Flower Identification	Certificate	10	Level 6	500
Surplus Food Distribution	Certificate	10	Level 6	500

Course Title	Award	Credits	NFQ	EU Fees €
Surplus Food Legislation and Safety	Certificate	10	Level 6	500
Sustainable Surplus Food Management	Certificate	10	Level 6	500
Repurposing of Surplus Food	Certificate	10	Level 6	500
Sustainable Food Surplus Practice	Certificate	30	Level 6	1,500
Bioprocess Engineering	Certificate	30	Level 7	4,500
Biopharmaceutical Processing	Certificate	30	Level 7	4,500
Science in Quality and Regulatory Affairs	Certificate	20	Level 7	1,600
Science in Quality Management	Certificate	20	Level 7	1,600
Science in Quality Statistics and Management	Certificate	20	Level 7	1,600
Buildings Archaeology	Certificate	15	Level 7	1,500
Ritual and Meaning in Archaeology	Certificate	15	Level 7	1,650
Introduction to Archaeological Interpretation	Certificate	15	Level 7	1,650
Bioprocessing Technologies	Certificate	30	Level 8	5,598
Biopharmaceutical Science	Certificate	30	Level 8	5,598
Medical Device Regulatory Affairs and Operations	Certificate	30	Level 8	4,890
Medical Device Regulatory Affairs and Quality	Certificate	30	Level 8	4,890
Quality for the Medical Device Industry	Certificate	40	Level 8	2,400
Decarbonising Energy Production	Certificate	5	Level 9	600
Fundamentals of Modern Energy Storage Solutions	Certificate	5	Level 9	600
Bioanalytical Techniques	Certificate	10	Level 9	2,000
<b>Health</b>				
Health and Safety Representation	Certificate	10	Level 6	900
Occupational Safety and Health	Certificate	10	Level 6	900
Practices in Health Informatics	Certificate	30	Level 6	2,500
Health Data Analytics	Certificate	30	Level 7	2,500
Acute Medicine Nursing	Certificate	10	Level 8	1,000
Building Digital Healthcare Communities	Certificate	30	Level 8	3,000
eHealth	Certificate	10	Level 8	900
Emergency Nursing	Certificate	20	Level 8	1,200
Advanced Clinical Laboratory Haematology	Certificate	10	Level 9	890
Advanced Practice in Transfusion and Transplantation Science	Certificate	10	Level 9	890
Advanced Clinical Microbiology and Infection	Certificate	10	Level 9	890

Course Title	Award	Credits	NFQ	EU Fees €
Advanced Clinical Chemistry	Certificate	10	Level 9	890
Clinical Immunology Global Infections and Therapeutics	Certificate	10	Level 9	890
Sports Data Analytics	Certificate	15	Level 9	1,500
Learning Design for Sports Performance Feedback	Certificate	15	Level 9	1,500
Programming for Sports Innovation	Certificate	15	Level 9	1,500
Digital Marketing and Emerging Technology in Sport	Certificate	15	Level 9	1,200
Digital Transformation for Sport	Certificate	15	Level 9	1,500
Principles of Healthcare Leadership	Standalone Module	10	Level 9	1,000
Therapeutic Communication	Standalone Module	10	Level 9	1,000
Eating Disorders in Adults and Adolescents	Standalone Module	10	Level 9	1,000
Quality and Healthcare Management	Standalone Module	10	Level 9	1,000
Healthcare Ethics	Standalone Module	10	Level 9	1,000
Introduction to Cognitive Behaviour Therapy	Standalone Module	10	Level 9	1,000
Early Intervention for People Who Experience First Episode Psychosis	Standalone Module	10	Level 9	1,000
Advanced Research Skills	Standalone Module	10	Level 9	1,000
<b>Engineering</b>				
Building Information Modelling for Sustainability	Certificate	15	Level 9	1,000
Visual Programming for Digital Construction	Certificate	10	Level 9	1,000
Access and Use (Part M, B, K, DAC, Universal Design)	Standalone Module	10	Level 9	667
Fire Safety (Part B Buildings Other than Dwelling Houses and FSC)	Certificate	10	Level 9	667
Services (Part E, F, G, H, J and D)	Certificate	5	Level 9	334
Heat Pump Installation, Maintenance and Commissioning	Certificate	20	Level 6	440

\* Please note that some courses may have a January start date ONLY. Fees listed may be subject to change. Please refer to the programme web page for up-to-date fees.

## Teistiméireacht Mac Léinn

# Student Testimonials



**Lisa Regan**  
Sustainable Development Goals

“I studied the Certification of Sustainable Development Goals – Partnership, People, Planet and Prosperity. It has been an incredible experience, in terms of realising the impact the SDGs play in both my professional and personal life; now having the evidence behind what I see clearly day to day; learning about the effects and the implications; and about the positive steps we can take to mitigate what has gone on in the past.

“I have enjoyed it immensely and I have learned so much. It was an amazing experience to do this micro-credential outside of my work and then, at the end of it, to be able to implement so much of what I have learned through this course. I would highly recommend people to do it, even just to become more aware that you can be a factor or mitigator of change in your own life. So, I definitely would say do it.”



**Craig Gibbs**  
Certificate in Access and Use (Part M, B, K, DAC, Universal Design)

“I had been aware of the micro-credential courses for a little while. I am an existing student in ATU, so when it came through on the socials and the email, I looked at what was available.

“The Access and Use course caught my eye as it is something I have a great interest in. I am a district inspector for the Office of Public Works and quite a lot of my professional work is making sure we are compliant with building regulations. So, having that additional knowledge aids me when making decisions when I am out and about.

“Academically, I found that it is a great bonus on the CV. There are a couple of areas I am interested in pursuing after my current course and having the Access and Use micro-credential completed is going to benefit me getting onto those. I am delighted with the results; it has been a fantastic course.”



## Táillí & Maoiniú

# Fees & Funding

As fees vary for each course, it is important that you check the relevant course webpage for further information regarding up-to-date fees.

### Funding Opportunities

With between 50% to 80% part-funding received under the Human Capital Initiative (HCI), ATU can offer part-funded places on 30+ of our micro-credential courses through the HCI Micro-Credentials Learner Fee Subsidy initiative in higher education. Other funding supports include Skillnets, DASBE, Springboard+, among others.

For full details on Fees & Funding, please check out our funding guide at [atu.ie/fees-funding](https://atu.ie/fees-funding)

### Self-Funding

To help make payments more manageable for students who are self-funding, ATU has a variety of payment options that include payment in-full or by instalment.

### Employer Funded

If your course is partly or fully funded by your employer, payment arrangements should be co-ordinated directly between your employer and the ATU Admissions team.

### Tax Relief

As ATU is recognised by Irish Revenue as an Approved Institution, students may be eligible to claim tax relief on tuition fees at the standard rate. To determine your eligibility and whether your chosen course qualifies for tax relief, please refer to the guidance provided on the Revenue website: [www.revenue.ie/en/personal-tax-credits-reliefs-and-exemptions](https://www.revenue.ie/en/personal-tax-credits-reliefs-and-exemptions).

## Conas Iarratas a Chur Isteach

# How to Apply

- Applications are submitted online by clicking the Apply Now button on the course webpage.
- Please ensure to complete all sections of the application form and upload all relevant information and supporting documentation. Where you are unable to upload documentation, you will be requested to do so via email by one of our Admissions team.
- Applications are assessed and qualified applicants will receive an offer.
- On acceptance of an offer, applicants will be invited to register in due course.

### When to Apply

Applications open in February for courses starting in September. Applications open in October for courses starting in January. Please refer to the course webpage for information on application dates.

### Recognition of Prior Learning

Recognition of Prior Learning (RPL) is described as a process by which prior learning is formally valued. It is a means by which formal, non-formal and informal learning can be assessed and recognised by ATU.

**Formal Learning:** Takes place through programmes or courses of study that are delivered in an organised, formal way by education providers and that attract awards or credits. Formal learning is sometimes referred to as certified or accredited learning.

**Non-Formal Learning:** Takes place alongside or outside the mainstream systems of education and training. It may be assessed but does not normally lead to formal certification. Examples of non-formal learning are planned learning and training activities undertaken in the workplace, voluntary sector, or in community-based settings.

**Informal Learning:** Takes place through life and work experience. Typically, it does not lead to certification.

For more information on how RPL may support your application, please visit the Recognition of Prior Learning webpage, [atu.ie/study/recognition-of-prior-learning](https://atu.ie/study/recognition-of-prior-learning)



## Further Information

Atlantic Technological University's webpages contain all the essential information you may need, including entry requirements, course duration, fees, and other course-specific details. If you require additional support, please contact the relevant OFPD Admissions team at the email address below:

### Galway - Mayo

**Admissions:** [learn.galwaymayo@atu.ie](mailto:learn.galwaymayo@atu.ie)

### Sligo

**Admissions:** [admissions.sligo@atu.ie](mailto:admissions.sligo@atu.ie)

### St Angelas

**Admissions:** [admissions.stangelas@atu.ie](mailto:admissions.stangelas@atu.ie)

### Donegal

**Admissions:** [admissions.donegal@atu.ie](mailto:admissions.donegal@atu.ie)



Ollscoil  
Teicneolaíochta  
an Atlantaigh

Atlantic  
Technological  
University